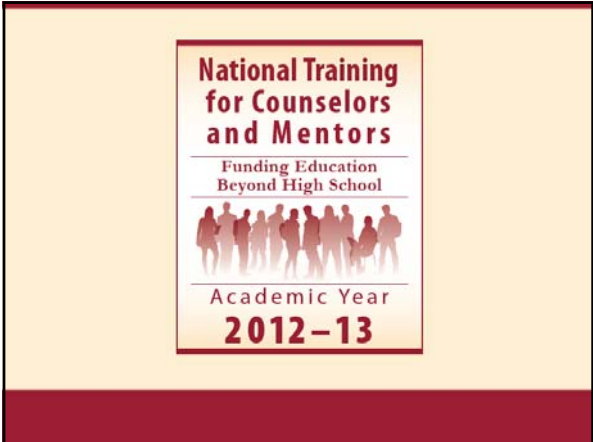


# Applying for Federal Financial Aid



---

---

---

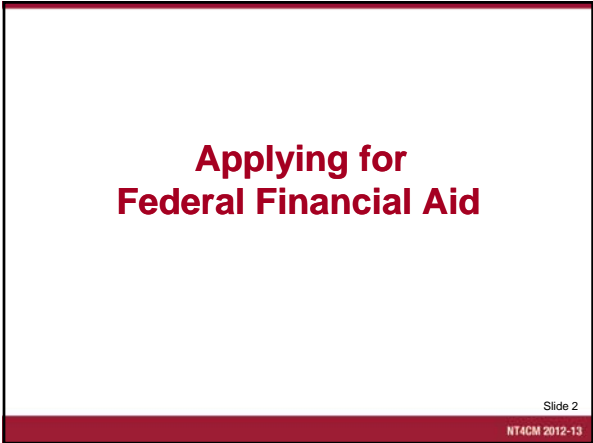
---

---

---

---

---



---

---

---

---

---

---

---

---



---

---

---

---

---

---

---

---

# Applying for Federal Financial Aid

## FAFSA

- Produced by the U.S. Department of Education
- Collects family's personal and financial information used to calculate student's EFC
- Available in English and Spanish
- Available in three formats:
  - Paper
  - PDF (Download from [www.fafsa.gov](http://www.fafsa.gov))
  - On-line

Slide 4

NT4CM 2012-13

---

---

---

---

---

---

---

---

## FAFSA on the Web



- Website: [www.fafsa.gov](http://www.fafsa.gov)
- 2012–13 *FAFSA on the Web* available on January 1, 2012
- FAFSA on the Web Worksheet:
  - Used as optional “pre-application” checklist

Slide 5

NT4CM 2012-13

---

---

---

---

---

---

---

---

## FAFSA on the Web

Good reasons to file electronically:

- Built-in edits to help prevent costly errors
- Simplification: Skip-logic allows student and/or parent to skip unnecessary questions
- Immediate submission of original application and any necessary corrections
- More detailed instructions than space allows on the paper FAFSA
- Ability to check application status on-line
- Simplified application process in subsequent years

Slide 6

NT4CM 2012-13

---

---

---

---

---

---

---

---

# Applying for Federal Financial Aid

## Modifications for 2012–13

- Minimal question changes
- One simplified log-in
- Expanded offering of IRS Data Retrieval
- Families expected to use IRS Data Retrieval if available at time of filing or they will be instructed to make corrections once they have filed tax returns.

Slide 7

NT4CM 2012-13

---

---

---

---

---

---

---

---

## Modified Question

- Name and location of high school from which student received diploma will have a “smarter” search feature
- FOTW will ask any student who answered high school question for 2011–12 the question again and advised to use “smarter” search feature

Slide 8

NT4CM 2012-13

---

---

---

---

---

---

---

---

## Deleted Questions

No questions deleted for 2012–13

Slide 9

NT4CM 2012-13

---

---

---

---

---

---

---

---

# Applying for Federal Financial Aid

## IRS Data Retrieval

- Students completing a 2012–13 FOTW will be able to utilize IRS Data Retrieval beginning February 1, 2012
- Data available in English and Spanish
- IRS data available within several days for electronic filers or several weeks for paper tax filers

Slide 10

NT4CM 2012-13

---

---

---

---

---

---

---

---

## IRS Data Retrieval

- FOTW includes logic to determine if applicant is eligible to use IRS Data Retrieval
- Applicant's response will take him or her to the IRS system or provide a message that the applicant should use own financial figures to complete FOTW

Slide 11

NT4CM 2012-13

---

---

---

---

---

---

---

---

## PIN Registration

- Website: [www.pin.ed.gov](http://www.pin.ed.gov)
- Not required, but speeds processing
- May be used by students and parents throughout aid process, including subsequent school years



Slide 12

NT4CM 2012-13

---

---

---

---

---

---

---

---

# Applying for Federal Financial Aid

**FAFSA on the Web Worksheet**

- Very similar to last year's worksheet
- Includes questions that may be applicable to all students
- Skip logic means all students will not see same number and sets of questions on FOTW

Slide 13  
NT4CM 2012-13

---

---

---

---

---

---

---

---

**FOTW Worksheet**

Section 1 collects general information about the student

- Social Security Number
- Citizenship status
- Drug convictions
- Selective Service registration

Slide 14  
NT4CM 2012-13

---

---

---

---

---

---

---

---

**FOTW Worksheet**

Section 2 collects information to determine the student's dependency status

Slide 15  
NT4CM 2012-13

---

---

---

---

---

---

---

---

# Applying for Federal Financial Aid

**FOTW Worksheet**

Section 3 collects parental information

- Tax, income, and other financial information
- Dislocated worker status
- Assets

Slide 16  
NT4CM 2012-13

---

---

---

---

---

---

---

---

**FOTW Worksheet**

Section 4 collects student information

- Tax, income, and other financial information
- Dislocated worker status
- Assets

Slide 17  
NT4CM 2012-13

---

---

---

---

---

---

---

---

**FOTW Worksheet**

Additional Information Requested

- College and housing information

Slide 18  
NT4CM 2012-13

---

---

---

---

---

---

---

---

# Applying for Federal Financial Aid

## Frequent FAFSA Errors

- Parent and student Social Security Numbers
- Divorced/remarried parental information
- Income earned by parents/stepparents
- Untaxed income
- U.S. income taxes paid
- Household size
- Number of household members in college
- Real estate and investment net worth

Slide 19

NT4CM 2012-13

---

---

---

---

---

---

---

---

## FAFSA Processing Results

- CPS notifies student of FAFSA processing results by:
  - E-mail notification containing a direct link to student's electronic SAR if student's e-mail was provided on paper or electronic FAFSA
- Student with FSA PIN can view SAR on line at [www.fafsa.gov](http://www.fafsa.gov)

Slide 20

NT4CM 2012-13

---

---

---

---

---

---

---

---

## FAFSA Processing Results

Central Processing System (CPS) notifies student of FAFSA processing results by:

- Paper Student Aid Report (SAR) if paper FAFSA was filed and student's e-mail address was not provided
- SAR Acknowledgement if filed electronically via FAFSA on the Web and student's e-mail address was not provided

Slide 21

NT4CM 2012-13

---

---

---

---

---

---

---

---

# Applying for Federal Financial Aid

## Making Corrections

If necessary, corrections to FAFSA data may be made by:

- Using FAFSA on the Web ([www.fafsa.gov](http://www.fafsa.gov)) if student has a FSA PIN
- Updating and mailing paper SAR
- Submitting documentation to school's financial aid office

Slide 22

NT4CM 2012-13

---

---

---

---

---

---

---

---

## Questions



Slide 23

NT4CM 2012-13

---

---

---

---

---

---

---

---

BROUGHT TO YOU BY:



---

---

---

---

---

---

---

---